

# Montpellier

THE PERFECT BALANCE OF FUNCTION AND STYLE

LAUNDRY - DISHWASHING - COOKING - COOLING

## Installation and Operating Instructions



## Freestanding Heat Pump Tumble Dryer MHP8SDW

Please read these instructions carefully before attempting to install or use this appliance.  
We recommend that you keep these instructions in a safe place for future reference.

# Welcome

## Thank you for choosing this Montpellier appliance.

Our appliances have been designed to provide you with the best combination of style, reliability and performance to give you years of trouble-free use.

You may be familiar with a similar product, but please take time to read these instructions carefully before installing or using your appliance to ensure you get the most from your purchase.



**2**  
**YEAR**  
**GUARANTEE**  
— PARTS & LABOUR —  
ACROSS ALL OUR MODELS  
**Montpellier**  
www.montpellier-appliances.com

**We recommend that you keep this manual in a safe place for future reference.**

Your appliance is covered by a comprehensive two year Parts & Labour Guarantee. In the unlikely event that you experience a problem with your appliance, you can rest assured that you are fully protected against the cost of repairs for the first 24 months. Please note that any claim must be accompanied by the model reference number, serial number and proof of purchase.

To activate your guarantee, you will need your product serial number. This can be found inside your appliance.

**NB:** Please make sure that you keep a copy of your original sales invoice as this will be needed if any service call is required.

**There are three ways to register your Guarantee:**

- **Online:** Visit the Support page on our website and complete the online Product Registration form. [www.montpellier-appliances.com](http://www.montpellier-appliances.com)
- **By Post:** Simply detach and fill in the form provided, attach a stamp and send it in the post. Don't forget to include your e-mail address so that we can send confirmation through to you.
- **By Phone:** Contact our warranty registration department on **0808 1961388**

## Thank you for choosing this product.

This User Manual contains important safety information and instructions on the operation and maintenance of your appliance.

Please take the time to read this User Manual before using your appliance and keep this book for future reference.

The design and specifications are subject to change without prior notice for product improvement.

# CONTENTS

---

## SAFETY INSTRUCTIONS

- Safety Instructions ..... 2

## INSTALLATION

- Product Description ..... 9
- Installation ..... 10

## OPERATION

- Quick Start ..... 12
- Before each Drying ..... 13
- Control Panel ..... 15
- Option..... 16
- Display..... 17
- Programmes..... 18
- Drying Programmes Table ..... 19
- Consumption Data..... 20

## MAINTENANCE

- Cleaning and Care ..... 21
- Trouble Shooting ..... 24

## TECHNICAL/WARRANTY

- Technical Specifications ..... 26
- Product Fiches..... 27
- Here For You..... 28



**DANGER**

This symbol indicates that there are dangers to the life and health of persons due to extremely flammable gas.

# SAFETY INSTRUCTIONS

---

## ■ Safety Instructions



CAUTION: RISK OF FIRE !



### **Warning!**

To prevent any damages to yours and others' life or property, you have to follow the safety notes.

### Intended use

- This heat pump dryer is intended for drying typical amounts of household laundry, which have been washed with water. It has been designed solely for private use and is not suitable for commercial or shared use (i.e. by several families in any kind of apartment building).
- Use this appliance only as described in this user manual.
- This appliance is for indoor use only.
- Any other use is deemed improper and may result in damage to property or even personal injury.
- The manufacturer accepts no liability for damage caused by improper use.

### Safety Instructions

- The appliance corresponds to protection class I and may only be connected to a plug with a protective conductor that has been installed properly. When connecting the appliance to the mains, make sure that the mains voltage is correct. You can find more information about this on the rating plate.

# SAFETY INSTRUCTIONS

---

## Warning!

### Electric shock hazard

- The electrical safety of this tumble dryer can only be guaranteed when correctly earthed. It is essential that this standard safety requirement is met. If in any doubt, please have the household wiring system tested by a qualified electrician. The manufacturer cannot be held liable for the consequences of an inadequate earthing system (e.g. electric shock).
- Before connecting the tumble dryer, ensure that the connection parameter on the rating plate (fuse rating, voltage and frequency) match the mains electricity supply. If in any doubt, consult a qualified electrician.
- Do not pull the power cord forcefully. Please grasp the mains plug instead
- Do not plug in or un-plug the mains plug with wet hands.
- Do not bend, clamp or damage the power cord and the power plug.
- If the power cable is damaged, it must be replaced by the manufacturer, its service agent or similarly qualified persons in order to avoid a hazard.
- Warning: The appliance must not be supplied through an external switching device, such as a timer, or connected to a circuit that is regularly switched on and off by a utility.
- Do not connect the appliance to the mains electricity supply by an extension lead, multi-socket adapter or similar.
- The accessibility of the plug must always be ensured, in order to disconnect the tumble dryer from the mains.
- If the appliance appears to be over heating or running abnormally, turn off the appliance and remove the plug immediately.

# SAFETY INSTRUCTIONS

---

## Danger of Injury

- The appliance must not be installed behind a lockable door, a sliding door or a door with a hinge on the opposite side to that of the tumble dryer, in such a way that fully opening the tumble dryer door is restricted.
- Do not disassemble or install the dryer without any instruction or supervision.
- Do not stack this dryer on a washing machine without stacking kits. (If you want to stack this dryer on a washing machine, please purchase the independent parts. Installation shall be done by the manufacturer, its service agent or similarly qualified persons to avoid any hazards.)
- Do not lean on the opened door of the dryer.
- Condensed water is not drinking water. It can cause health problems in both people and animals if consumed.

## Danger of damage

- Allow the dryer to stand for a minimum of 4 hours before first use or after it has been moved as the dryer contains refrigerant gases.
- Do not operate the dryer without the door filter.
- Do not dry the clothes before being spun.
- Do not expose the dryer to direct sunlight.
- Do not install the dryer in humid and or damp environments.
- While cleaning/performing any maintenance on the appliance, remember to pull out the power plug and do not directly spray the dryer with water.
- The appliance should not be overturned during normal use or maintenance.

# SAFETY INSTRUCTIONS

---



CAUTION: RISK OF FIRE !

Explosion & danger of fire.

- Please do not dry the clothes with any flammable substances such as kerosene or alcohol. Otherwise, there may be a risk of an explosion.
- The appliance contains an environmentally friendly but flammable R290 refrigerant. Keep away from open flame and other sources of ignition.
- The tumble dryer is not to be used if industrial chemicals have been used for cleaning.
- Do not dry unwashed items in the tumble dryer.
- Items that have been soiled with substances such as cooking oil, acetone, alcohol, petrol, kerosene, spot removers, turpentine, waxes and wax removers etc should be washed in hot water with an extra amount of detergent before being dried in the tumble dryer.
- Items such as foam rubber (latex foam), shower caps, waterproof textiles, rubber backed articles and clothes or pillows fitted with foam rubber pads should not be dried in the tumble dryer.
- Fabric softeners, or similar products, should be used as specified by the fabric softener instructions.
- Oil-affected items can ignite spontaneously, especially when exposed to heat sources such as in a tumble dryer. The items become warm, causing an oxidation reaction in the oil. Oxidation creates heat. If the heat cannot escape, the items can become hot enough to catch fire.

# SAFETY INSTRUCTIONS

---

- Piling, stacking or storing oil-affected items can prevent heat from escaping and so create a fire hazard.
- Remove all objects from pockets such as lighters and matches.
- If it is unavoidable that fabrics that contain vegetable or cooking oil or have been contaminated by hair care products be placed in a tumble dryer they should first be washed in hot water with extra detergent. This will reduce, but not eliminate, the hazard.
- **WARNING:** Never stop a tumble dryer before the end of the drying cycle unless all items are quickly removed and spread out so that the heat is dissipated. If this is done and all clothes are dry the dryer must be allowed to cool by either allowing it to finish the cycle it is on or by selecting the 10 minute cool cycle. Never just leave the door open as anyone could then touch the hot inside !!
- Openings must not be obstructed.
- The lint filter has to be cleaned after every load.
- Lint must not to be allowed to accumulate around the tumble dryer.



# SAFETY INSTRUCTIONS

---

## Safety with children

- This appliance can be used by children aged from 8 years and above and persons with reduced physical, sensory or mental capabilities or lack of experience and knowledge if they have been given supervision or instruction concerning use of the appliance in a safe way and understand the hazards involved. Children shall not play with the appliance.
- Cleaning and user maintenance shall not be done by children without supervision.
- Children should be supervised to ensure that they do not play with the appliance.
- Children of less than 3 years should be kept away unless continuously supervised.
- Always close the door after use. In this way you will avoid the danger of:
  1. Children climbing onto or into the dryer or hiding things in it.
  2. Pets or other small animals climbing into it.

# SAFETY INSTRUCTIONS

---

## Correct Disposal of this product:



This marking indicates that this product should not be disposed with other household wastes throughout the EU. To prevent possible harm to the environment or human health from uncontrolled waste disposal, recycle it responsibly to promote the sustainable reuse of material resources. To return your used device, please use the return and collection systems or contact the retailer where the product was purchased. They can take this product for environmental safe recycling.

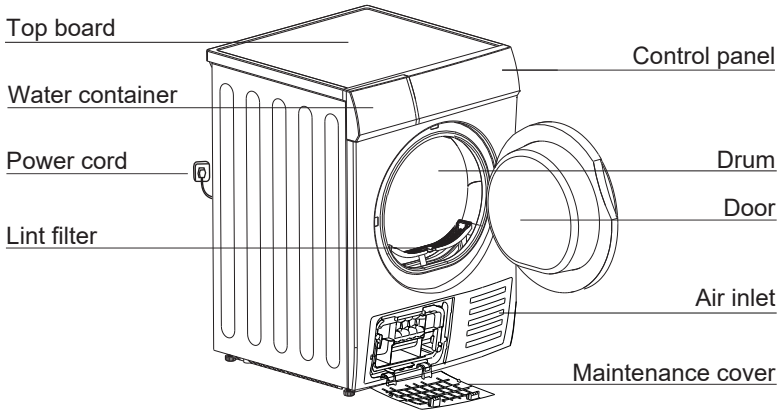
## Disposal of packaging material

The packaging is designed to protect the appliance from damage during transportation. The packaging materials are environmentally friendly and should be recycled. Recycling the packaging can reduce the use of raw materials in the manufacturing process and the amount of waste in landfill sites.

Model	Rated capacity
MHP8SDW	8.0kg

# INSTALLATION

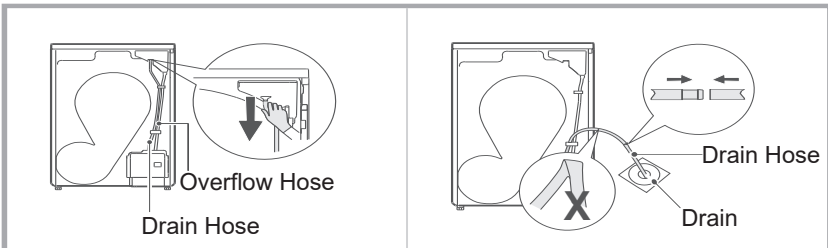
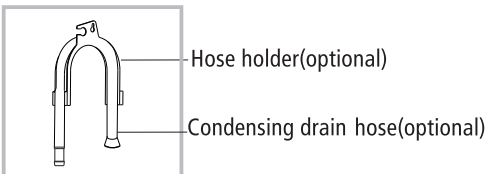
## ■ Product Description



Note: The actual model you purchased might differ. The above diagram is for illustration purposes only.

## Accessories

If you wish to drain the water rather than it be collected in the water container then you can purchase a drain hose as an optional extra. To fit the drain hose please wear gloves and follow the fitting instructions.



Carefully pull down and remove the drain hose from the tank housing (making sure to remove the drain hose and not the overflow hose).

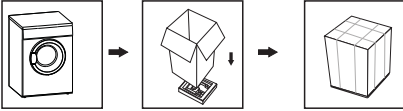
Connect the drain hose extension and securely place the end of the hose in a sink, sink trap or separate stand pipe (be careful not to bend the external drain hose).

**! ATTENTION:** The hose must be connected in a manner that it cannot be displaced. If the hose comes out during water discharge, there might be flooding in your house.

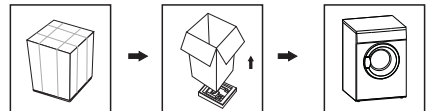
# INSTALLATION

## ■ Installation

### • Packing the dryer



### • Unpacking the Dryer



### ⚠ Warning!

Packaging material (e.g. Foils, Styrofoam) can be dangerous for children. There is a risk of suffocation! Keep all packaging well away from children.

## Transportation.

Move cautiously. The machine door cannot be used as a handle for transport. If the dryer can't be transported upright, the dryer can be tilted to the right less than 30°.

## Risk of Injury and damage !

- Improper handling of the appliance may result in injury. The appliance is very heavy. Never transport or carry the appliance alone; always with the assistance of another person.
- Remove all obstacles on the transport route and from the installation location, e.g. open doors and clear away objects lying on the floor.
- Do not use the open door as a handhold.
- Remove all package material before using the appliance.
- Before setting up the tumble dryer, check it for any externally visible damage.
- Do not install or use a damaged tumble dryer.
- Do not install the tumble dryer in a room where there is a risk of frost occurring. At temperatures around freezing point the tumble dryer may not be able to operate properly. There is a risk of damage if the condensed water is allowed to freeze in the pump and hoses.

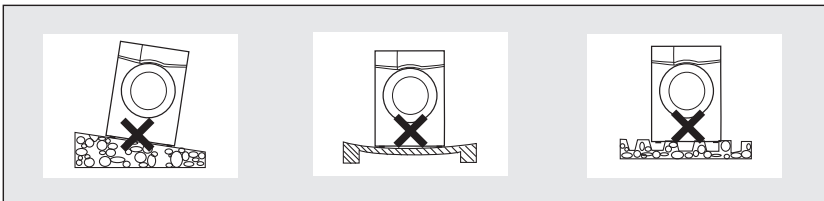
# INSTALLATION

## Installation Position



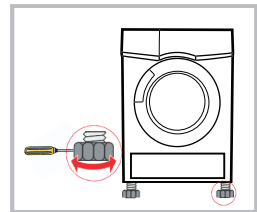
**Warning!** Children can become entangled in the packaging film or swallow small parts and suffocate. Do not allow children to play with the packaging.

- The appliance is designed as a freestanding appliance and should not be built-in to any housing or be covered by a door of any description.
- Do not restrict the floor clearance through deep pile carpets, strips of wood or similar. This might cause heat built-up which would interfere with the operation of the appliance.
- It is recommended that, for your convenience, the machine is positioned close to your washing machine.
- Do not stack this dryer on a washing machine without a stacking kit. If you want to stack this dryer on a washing machine, please purchase the independent parts. Installation shall be done by either the manufacturer, its service agent or similarly qualified persons to avoid any hazards.
- The tumble dryer must be installed in a clean place, where dirt does not accumulate. Air must be able to circulate freely around the appliance. Do not obstruct the front air inlet or the air intake grilles at the back of the machine.
- To keep vibration and noise within minimum levels when the dryer is in use, it must be placed on a firm and level surface.
- The feet must never be removed.
- The tumble dryer is designed to work in ambient temperatures of +5 to +35°C



## Level Adjusting

Once in its permanent operating position, check that the dryer is absolutely level with the aid of a spirit level. If it is not, adjust the feet by hand or using a suitable tool.



## Power Supply Connection

- Make sure that the voltage of the power supply is the same as the electric specification.
- Do not connect the dryer to anything other than a standard UK socket outlet!

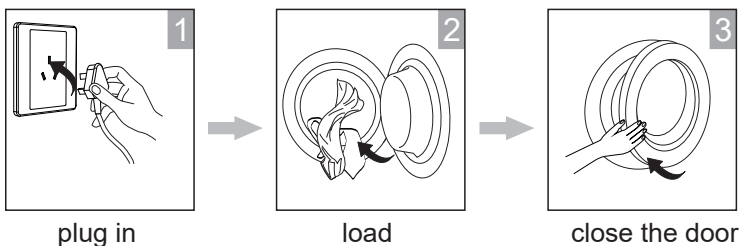
# OPERATION

## ■ Quick Start

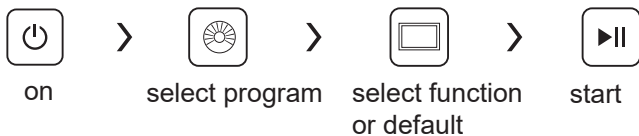
### Note!

Before using, make sure the tumble dryer is installed correctly.

## Before Drying

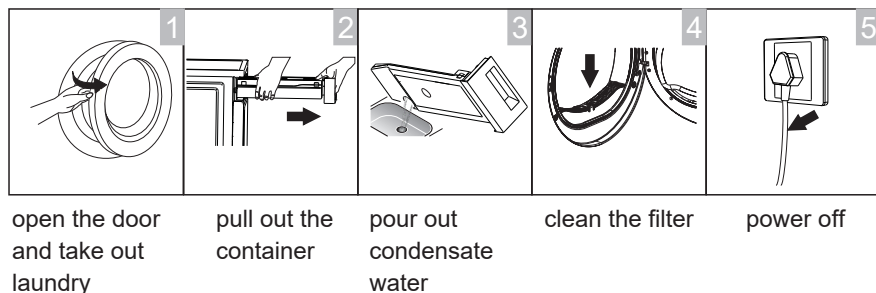


## Drying



## After Drying

Buzzer beep and "0:00" on display.



### Note!

- If the socket with a switch is used, please press the switch to turn off the power directly.

# OPERATION

---

## ■ Before each Drying

### Note!










Before the first use, please use a soft fabric cloth to clean the inside of the drum, then follow the below instructions.

- 1.Put some clean rags into the drum.
  - 2.Plug in to the power outlet, press [On/Off].
  - 3.Select the [Refresh] Programme, press [Start/Pause] button.
  - 4.After finishing this programme, please follow the cleaning and care instructions to clean the lint filter (ref to page 21).
- During drying, the airflow and pump will generate some noise which is entirely normal.

- Before drying, thoroughly spin the laundry in the washing machine. High spin speed shortens the drying time and saves energy.
- For uniform drying result, sort the laundry according to fabric type and select the appropriate drying programme.
- Before drying, please close zips, hooks and eyelets, buttons, tie fabric belts, etc.
- Remove all objects from pockets such as lighters and matches.
- Sew in or remove underwiring from bras.
- Close duvet covers and pillow cases to prevent small items from being rolled up inside them.
- Leave jackets open and undo any long zips so that textiles dry evenly.
- Do not over dry the clothes, because over dried clothes can easily get creases.
- Do not dry the articles containing rubber or similar elastic materials.
- Keep the area around the tumble dryer clean. Coal dust or flour may cause an explosion.
- The door shall be opened only after the programme of the tumble dryer is finished to avoid being scalded by hot steam or over heated clothing inside the machine.
- Clean the lint filter and empty water container **after each use** to avoid extension of drying time and increase of energy consumption.
- Do not dry clothes after any dry-clean process.

# OPERATION

The reference weight of dry clothes (weight per item)

 <p>Sweater Mixed 800g</p>	 <p>Jacket Cotton 800g</p>	 <p>Jeans Cotton 800g</p>	 <p>Bath Towel Cotton 900g</p>
 <p>Single bed sheet Cotton 600g</p>	 <p>Work clothes 1120g</p>	 <p>Pyjamas 200g</p>	 <p>Shirt Cotton 300g</p>
 <p>T-Shirt Cotton 180g</p>	 <p>Underwear Cotton 70g</p>	 <p>Socks Mixed weave 50g</p>	

## Note!

- Do not put in more than the rated load.
- Do not dry dripping wet laundry. The dryer might get damaged

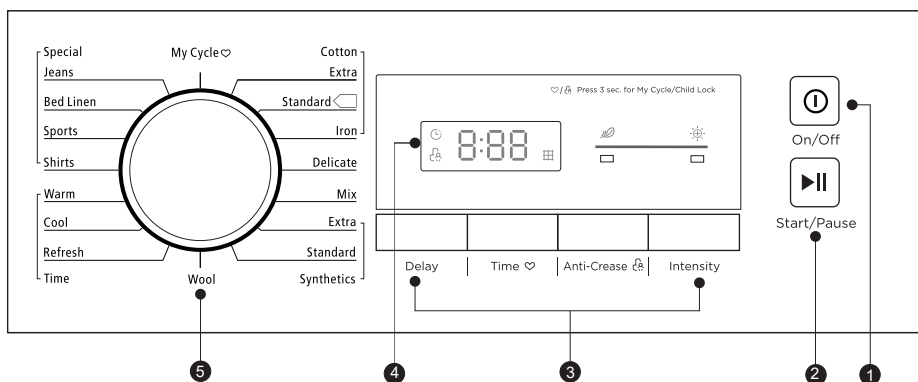
Only dry laundry suitable for tumble drying. Check the laundry care labels before placing the items in the drier:

- Suitable for tumble drying
- Normal drying process.: Drying in the tumbler is possible under normal load and temperature.
- Mild drying process.: Caution is appropriate when tumble drying. Select mild process with reduced thermal action.
- Do not tumble dry.: Articles unsuitable for drying in the tumbler.



# OPERATION

## ■ Control Panel



**1 On/Off**  
Product is switched on or off.

**2 Start/Pause**  
Press the button to start or pause the drying cycle.

**3 Option**  
These buttons are used for setting additional functions.

**4 Display**  
This display shows the setting, estimated program time remaining and status messages of your dryer.

**5 Programmes**  
Different drying cycles can be selected according to the users need and the type of laundry to be dried.

# OPERATION

---

## ■ Option

Delay

### Delay

This function is used for delaying the start of the drying programme up to 24 hours. When the delayed programme starts, the time starts to countdown on the display and the delay icon blinks.

1. Load your laundry and make sure the machine door is closed.
2. Press the **【On/Off】** button, then use the programme selector knob to select the desired programme.
3. You can additionally select the **【Anti-Crease】** or **【Signal】** functions according to your need.
4. Press the **【Delay】** button.
5. Repeatedly press the **【Delay】** button to select the desired delay time.
6. After the **【Start/Pause】** button is pressed, the Dryer will now countdown until the required time to start. The drying procedure will be automatically performed when the delay time is over.
7. If you press the **【Start/Pause】** button again, the delay function will be paused.
8. If you want to cancel the “Delay” function, please press the **【On/Off】** button.

Time

### Time

When the **【Warm】** or **【Cool】** or **【Refresh】** programme is selected, the **【Time】** button can be used to adjust the drying time in 10 min. steps.

Anti-Crease

### Anti-Crease

At the end of the drying cycle, the anti-crease time is 30 minutes (default) or 120 minutes (selected). This function prevents the laundry from creases. The laundry can be removed during the anti-crease phase. Except **【Cool】**, **【Wool】** and **【Refresh】**, all the other programmes have this function.

Intensity

### Intensity

You can adjust the dryness level of the laundry by pressing the **【Intensity】** button. There are four grades.

1. The intensity function can be activated only before the programme starts.
2. Press the **【Intensity】** button repeatedly to increase the drying grade.
3. Except the **【Cotton Iron】**, **【Delicate】**, **【Wool】**, **【Warm】**, **【Cool】**, **【Refresh】** programme, all the other programmes can be adjusted with the **【Intensity】** function.

# OPERATION

---

## My Cycle

### My Cycle

Used to define and save your favourite programme, which is used frequently.

1. Select the desired programme and other drying functions.
2. Press and hold the **【♥】** for 3 seconds until the beep sounds and the desired programme has been saved.
3. Turn the programme selector to the **【My Cycle】** position, then you can start your favourite programme. If you want to change the **【My Cycle】** settings, repeat the steps (1) and (2).

## Child Lock

### Child Lock

1. This machine incorporates a special child safety lock, which can prevent children from carelessly pressing buttons or starting an incorrect operation.
2. When the dryer is running or pausing, press the **【Anti-Crease】** and **【Signal】** at the same time for 3 seconds to activate the child lock.
3. When the child lock function is set, the display will show the Child lock icon and all buttons are deactivated, except **【On/Off】** button.
4. To deactivate the child lock function, the **【Anti-Crease】** and **【Signal】** buttons shall be pressed at the same time for 3 seconds.

## ■ Display



Delay



Child lock



Anti-crease



My cycle



Remaining Time indicator/Error message



Clean filter (warning)



Empty water container (warning)



Intensity level

# OPERATION

---

## ■ Programmes

### Programme selector

1. When the LED display screen lights up, rotate the programme knob to select the desired programme.
2. Select the **【Delay】** , **【Time】** , **【Intensity】** , or **【Anti-Crease】** functions for additional options.
3. Press the **【Start/Pause】** button.
4. Press the **【On/Off】** button after the programme has completed.

### Programme start

The drum will rotate after the programme starts. The remaining programme time will be displayed.

### Programme end

1. The drum will stop rotating after the programme ends. The display will show "0:00". The dryer will start **【Anti-Crease】** function if the user doesn't remove the load.  
(Refer to page 16).  
Please press **【On/Off】** button after unloading the tumble dryer to cut off power and pull out the plug.
2. Deal with the problems according to "Trouble Shooting" section, if there is an unexpected stop during the drying procedure or the dryer shows an Error Code (Refer to page 24).

#### Note!

- During drying, water may collect between the window and the seal. This does not affect the function of your dryer!

# OPERATION

## ■ Drying Programmes Table

Programme		Max Load	Application/Properties	Delay	Time
Cotton	Extra	8.0kg	For single or multi-layer cotton laundry to be dried completely for direct storage.	Y	N
	Standard □				
	Iron		For single layer cotton laundry to remain damp for ironing.		
Delicate		1.0kg	For delicate laundry that is suitable for drying or laundry advised to be hand washed at low temperature.	Y	Y
Mix		3.5kg	For mixed fabrics from cotton and synthetics.	Y	N
Synthetics	Extra	3.5kg	For thick or multi-layer synthetic fabrics to be dried completely .	Y	N
	Standard		To dry thin synthetic textiles, which are not ironed, such as easy care shirts, baby cloths or socks.		
Wool		1.0kg	For machine washable wool items .	Y	N
Time	Refresh	1.0kg	To refresh clothes kept at closed environment for a long time or to remove odors. Min. 20 min to max. 150 min.(in 10 min. steps)	Y	Y
	Cool	—	To air items without heating. Min. 10 min to max. 30 min. (in 10 min. steps)		
	Warm	—	To dry individual items or complete the drying process of multi-layer fabrics with different drying behavior, such as jackets, pillows or voluminous items. Min 10 min. to max. 120 min.(in 10 min.steps)		
Special	Shirts	1.0kg	For easy care laundry, such as shirts and blouses equipped with anti-crease functionality to minimize the ironing effort Place clothes loosely in the dryer. Once dried, remove quickly and hang on a clothes hanger.	Y	N
	Sports	3.0kg	To dry sportswear and thin fabrics from polyester, which are not ironed.		
	Bed Linen	4.0kg	To dry bed linen, bed sheets or other large items.		
	Jeans	4.0kg	To dry jeans or leisure clothes that are spun at high speed in the washing machine.		
My Cycle		—	Define and save your favourite programme.	Y	—

### Note!

- □ Test programme in accordance with Regulation 392/2012/EU for energy labelling, measured in accordance with EN 61121 and suitable for drying normal cotton load at rated load capacity.
- Thick or multi-layered fabrics, e.g. bedlinen, jeans, jackets etc, are not easy to dry. You'd better choose Cotton Extra programme.
- As the uneven material, thick and multi-layered clothes are not easy to dry, it is better to choose the appropriate time drying programme to dry them if some parts of the clothes still damp after programme finished.

# OPERATION

## ■ Consumption Data ①

Model	Program	Capacity	Spin Speed / Residual Humidity	Drying Time	Energy Consumption
MHP8SDW	Cotton Standard	8kg	1000rpm / 60%	210min	1.90kWh
	Cotton Standard	4kg	1000rpm / 60%	125min	1.10kWh
	Synthetic Standard	3.5kg	800rpm / 40%	60min	0.60kWh

### Note!

- Thick or multi-layered fabrics, e.g. jackets etc., are not easy to dry. You are better off choosing Cotton Extra programme or use “Intensity” function.
  - As uneven material, thick and multi-layered clothes are not easy to dry, it is better to choose the appropriate time drying programme to completely dry them if some parts of the clothes are still damp after programme finishes. All
- ① data is measured in accordance with EN 61121.

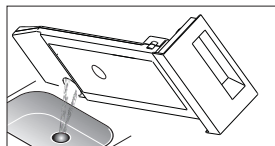
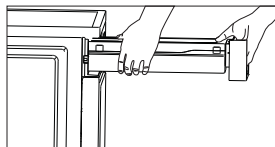
The actual consumption may differ from the values given in the table, depending on the amount of the laundry, type of fabric, residual moisture and any additional functions selected.

# MAINTENANCE

## ■ Cleaning and Care

### Empty the water container

1. Pull out and hold the water container with two hands.
2. Tilt the water container, pour out the condensate water into the sink.
3. Re-Install the water container.



### ⚠ Warning!

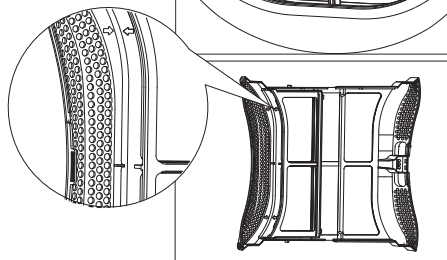
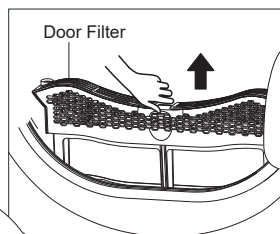
- Empty the water container after each use. Once the water container is filled completely, the programme will be paused and the "FULL" icon will light. After the container is emptied, the dryer can be restarted by pressing **【Start/Pause】** button.
- Do not drink the condensate water.
- Do not use the dryer without the water container.

### Clean the filters

This dryer has a primary door lint filter. Make sure you clean the door filter after each cycle.

### 📌 Note!

- To ensure the double-layer filter can be closed smoothly, the arrows at both ends need to be aligned, and the middle slot and the rib need to be aligned.



### Clean the door filter

1. Open the door.
2. Take out the door filter.
3. Open the filter and remove the fluff on the filter, You can clean it in running water.
4. Dry the door filter thoroughly before installing it back.

### 📌 Note!

- Take notice of the correct orientation before you insert the door filter.

# MAINTENANCE

---

## **⚠ Warning!**

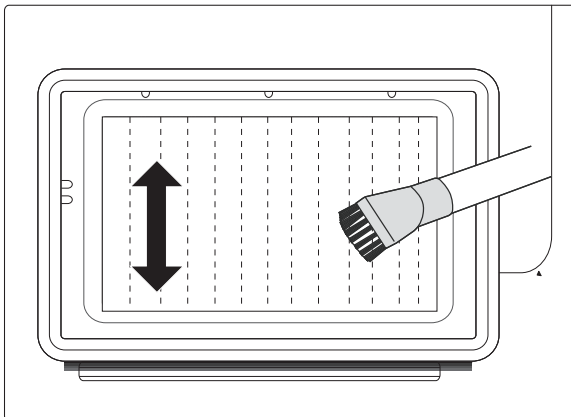
**Do not touch the heat exchanger with your hand, as this may cause an injury.**

## Cleaning the heat exchanger

Leave the dryer to cool down.

Residual water may leak out, place an absorbent cloth under the maintenance cover.

- Open and lower the maintenance cover to gain access to the heat exchanger (the heat exchanger is not removable so do not attempt to remove it).
- Clean the heat exchanger without applying any pressure. Otherwise the heat exchanger could be damaged. The dryer will not dry if the cooling fins are damaged or bent.
- As necessary or approx. once every 3 months, remove the fluff from the heat exchanger using a vacuum cleaner with a dusting brush attachment (as shown below) or a separate brush. The fins are very sharp and delicate so should not be touched by hand or rubbed with anything that could damage the fins .
- Once cleaned, close the maintenance cover ready to use the dryer again.





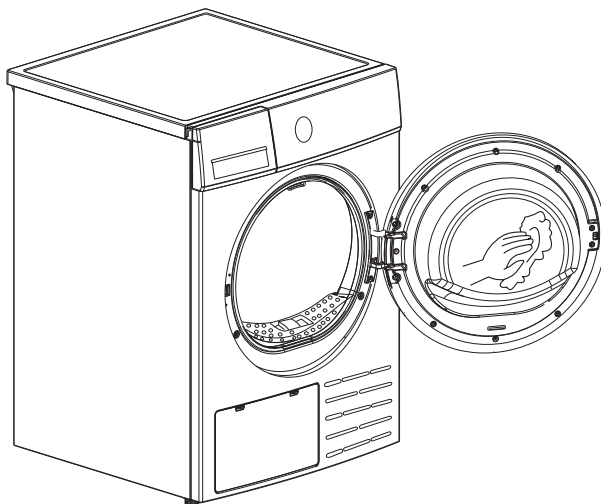
# MAINTENANCE

---

## Cleaning the tumble dryer

### ⚠ Warning!

- Disconnect the power cord before cleaning!
- Clean the dryer with a wet cloth which is only damped by clean water.
- Do not use solvents, abrasive cleaners, glass cleaners or all-purpose cleaners. These could damage plastic surfaces and other parts.
- Please wear gloves when cleaning.



- Prepare a wet cloth damped by clean water.
- Clean the door, especially the inside window.
- Clean the sealing around the door opening.
- Clean the humidity sensor inside the drum.
- Take out all the filters, clean the sealing and air flow openings.
- Before starting the dryer, dry all parts with a soft cloth.

# MAINTENANCE

---

## ■ Trouble Shooting

Many malfunctions and faults that might occur in daily operation can be easily remedied. Time and money will be saved because a service call won't be needed. The following guide may help you to find the reason for a malfunction and correct it.

Display	Reason	Solutions
"E32"	Humidity sensor error	Please contact your local service center if the problem occurs.
"E33"	Temperature sensor error	
"E82"	Communication error	

### Warning!

- Only authorised technicians can carry out repairs.
- If the LED displays other prompt and the dryer does not work, please call the service.


### Note!

Before you call the service, please check if you have dealt with the problems yourself by consulting the user instructions.

# MAINTENANCE

## Note!

Before you call the service, please check if you have dealt with the problems yourself by consulting the user instructions.

Problem	Solution
<ul style="list-style-type: none"><li>• Display is not on</li></ul>	<ul style="list-style-type: none"><li>• Check if the power supply works.</li><li>• Check if the mains plug is inserted.</li><li>• Check the selected programme .</li><li>• Press the <b>【On/Off】</b> button.</li></ul>
<ul style="list-style-type: none"><li>• "FUL" is lighting</li></ul>	<ul style="list-style-type: none"><li>• Check the water container. If it's full, please pour out the condensate water and restart the dryer.</li><li>• If the container is not full, please restart the dryer directly.</li><li>• If the light still remains on, please call for service.</li></ul>
<ul style="list-style-type: none"><li>• "  " is lighting</li></ul>	<ul style="list-style-type: none"><li>• Clean the lint filter.</li></ul>
<ul style="list-style-type: none"><li>• Dryer does not start</li></ul>	<ul style="list-style-type: none"><li>• Connect the tumble dryer to the mains.</li><li>• Turn on the tumble dryer.</li><li>• Check that the door is closed.</li><li>• Check the programme is set.</li><li>• Press the <b>【Start/Pause】</b> button.</li></ul>
<ul style="list-style-type: none"><li>• Degree of dryness was not reached or drying time was too long</li></ul>	<ul style="list-style-type: none"><li>• Clean lint filter and heat exchanger.</li><li>• Empty the water container.</li><li>• Check the drain hose if fitted.</li><li>• Check installation place is appropriate.</li><li>• Keep the air inlet clean.</li><li>• Use higher drying intensity level programme or time programme.</li></ul>
<ul style="list-style-type: none"><li>• The dryer switches off at the end of the programme</li></ul>	<ul style="list-style-type: none"><li>• The dryer switches off automatically for energy saving. This is not an error but a normal function.</li></ul>
<ul style="list-style-type: none"><li>• There are humming noises</li></ul>	<ul style="list-style-type: none"><li>• The compressor is operating. These noises are quite normal and do not indicate a fault.</li></ul>

## Warning!

If you cannot deal with the problems by yourself and need help:

- Press the **【On/Off】** button.
- Pull out the mains plug and call the service.

# TECHNICAL/WARRANTY

---

## ■ Technical Specifications

Parameter \ Model	<b>MHP8SDW</b>
Dimension(H*W*D)	845*595*600(mm)
Ambient temperature	+5°C ~ +35°C
Rated input power	800W
Rated voltage	220-240V~
Rated frequency	50Hz
Refrigerant	R290
Weight of product	41kg
Rated capacity	8.0kg
GWP	3
CO <sup>2</sup> = eq	0.00t
Quantity of refrigerant	120g

### Note!

- The rated capacity is the maximum capacity, make sure that the dry clothes which are loaded to the appliance do not exceed the rated capacity.
- Do not install the tumble dryer in a room when there is a risk of frost occurring. At temperatures around freezing point the tumble dryer may not be able to operate properly.
- There is a risk of damage if the condensate water is allowed to freeze in the pump, hoses and / or condensate water container.

# TECHNICAL/WARRANTY

## ■ Product Fiches

Model	<b>MHP8SDW</b>
Rated Capacity	8.0kg
Dryer Type	Condenser
Energy efficiency class	A++
Weighted annual energy consumption (AE <sub>c</sub> )	<b>1</b> 235.0kWh/year
Automatic or non-automatic	Automatic
EU Ecolabel	N/A
Energy consumption of the standard cotton programme	
Weighted energy consumption of the standard cotton programme at full and partial load	1.44kWh
Energy consumption of the standard cotton programme at full load	1.90kWh
Energy consumption of the standard cotton programme at partial load	1.10kWh
Power consumption of the off-mode (Po)	0.5W
Power consumption of the left-on mode (Pl)	0.8 W
Duration of the left-on mode	10 min
Programme time of the 'standard cotton programme'	
Weighted programme time of the standard cotton programme at full and partial load	162min
Programme time of the standard cotton programme at full load	210min
Programme time of the standard cotton programme at partial load	125min
Condensation efficiency class A (most efficient) to G (least efficient)	B
Average condensation efficiency of the standard cotton programme at full load	81%
Average condensation efficiency of the standard cotton programme at partial load	81%
Weighted condensation efficiency for the standard cotton programme at full and partial load	81%
Sound power level for the standard cotton programme at full load	65dB

### Remarks:

- 1** Energy consumption per year, based on 160 drying cycles of the standard cotton programme at full and partial load, and the consumption of the low-power modes. Actual energy consumption per cycle will depend on how the appliance is used. The programme 'Cotton Standard' used at full and partial load is the standard drying programme to which the information in the label and the fiche relates. This programme is suitable for drying normal wet cotton laundry and it is the most efficient programme in terms of energy consumption for cotton.

# Here For You

## After-sales assistance

If you continue to experience problems with your appliance, please call the Montpellier customer service helpline on: **01759 487839**

D`YUgY \ Uj Y` U`` nci f` dfcXi Wñ XYHU]g` Uj U]UV`YZ` ]bWi X]b[ ` h Y` a cXY` bi a VYfZ` gYf]U` bi a VYfZ` cf][ ]bU` gU`Yg` ]bj c]W` fWYUf` m` gl` ck ]b[ ` a cXY` bi a VYfZ`XUH` cZ` di fW` UgY` UbX` nci f` fYHU] YfYg` XYHU] gL` VYZ` fY` fY[ ]ghYf]b[ ` UZU` `H`

The service call cannot progress without this information.

## Your 2 year Manufacturer's guarantee

THIS DOES NOT AFFECT YOUR STATUTORY RIGHTS.

Your new Montpellier appliance carries a free guarantee which protects you against the cost of repairs during the first 24 months from date of purchase provided that:

Any claim is accompanied by evidence of the model reference, model serial number and proof of purchase, such as a Sales Receipt, showing that the appliance was purchased within the 24 months prior to the date of claim.

## What is not covered under the Guarantee

- Any appliance not correctly installed and operated in accordance with the manufacturer's instructions
- Any appliance that is used for anything other than domestic purposes.  
Any defect caused by accident, misuse, unauthorised modification or inexperienced repair.
- Cost of Call-out where a fault cannot be found with the appliance.  
Cost of Call-out for work covering routine maintenance, such as, but not exclusively, cleaning of filters or defrosting.
- Cost of Call-out for work required to correct the alignment of doors following door reversal procedures carried out by you.  
Use of the appliance by anyone other than the Householder.  
Use in any commercial environment.
- Consumable items, such as, but not exclusively, fuses in plugs, bulbs and breakable items which require routine replacement.  
Repair costs incurred that have not been authorised by Montpellier service and/or carried out by a non-approved Montpellier engineer.
- Montpellier Appliances do not accept claims for consequential loss, rusting, corroding, delivery damage or scratches.

## YOUR GUARANTEE IS VALID ONLY IN THE UK & REPUBLIC OF IRELAND

To register your appliance simply complete the card in your appliance pack and return it with a stamp affixed. Alternatively you can register online at [www.montpellier-appliances.com/support](http://www.montpellier-appliances.com/support)

## SERVICE HELP-LINE

Should your appliance develop a fault, please call the Montpellier customer service helpline on:

**01759 487839**

D`YUgYfYa Ya VYf`tc \ Uj Y`U`` nci f` dfcXi Wñ XYHU]g` Uj U]UV`YZ` ]bWi X]b[ ` h Y` a cXY` bi a VYfZ` gYf]U` bi a VYfZ`XUH` cZ` di fW` UgY` UbX` nci f` fYHU] YfYg` XYHU] gL` VYZ` fY` fY[ ]ghYf]b[ ` UZU` `H`

**Montpellier Domestic Appliances Ltd.**

Unit 1, Tewkesbury Retail Park, Northway Lane,  
Tewkesbury, Gloucestershire GL20 8JU

[www.montpellier-appliances.com](http://www.montpellier-appliances.com)



The symbol on the product or on its packaging indicates that this product may not be treated as household waste. Instead it shall be handed over to the applicable collection point for the recycling of electrical and electronic equipment. By ensuring this product is disposed of correctly, you will help prevent potential negative consequences for the environment and human health, which could otherwise be caused by inappropriate waste handling of this product. For more detailed information about recycling of this product, please contact your local city office, your household waste disposal service or the shop where you purchased the product.